

UNA VISIONE COSTANTEMENTE  
CHIARA E NITIDA PER TUTTO IL  
GIORNO, OGNI GIORNO

**BAUSCH+LOMB**



# STRAORDINARIA PERFORMANCE DEL DESIGN




**High Definition™ Optics** – riduzione dell'aberrazione sferica lungo tutti i meridiani di cilindro e sfera della lente per un livello di visione superiore

**Auto Align Design™** – tecnologia che garantisce una straordinaria stabilità per una visione che rimane costantemente nitida e chiara

**ComfortMoist™** – migliora il comfort all'inserimento e per tutto il giorno



# PARAMETRI

Materiale:	balafilcon A (silicone hydrogel)
Contenuto d'acqua:	36%
Trasmissibilità ossigeno:	91 Dk/t*
Tecnologia:	Ottica asferica
Curva base:	8.9 mm
Diametro:	14.5 mm
Zona ottica:	8.0 mm
Spessore centrale:	0.10 mm
Poteri:	Sfera: da +6.00D a -6.00D (int 0.25D), piano compreso; da -6.50D a -9.00D (int. 0.50D) Cilindri: -0.75D, 1.25D, -1.75D, -2.25D
Assi:	da 10° a 180° (int. 10°)
Colorazione:	Azzurrata
Sostituzione consigliata:	Mensile
Modalità d'uso:	Giornaliero, Prolungato, Continuo
Marcatura riferimento:	Una ad ore 6 

\*Al centro in lente di -3.00D -1.25 x 180. Basato su Dk corretto al bordo.



# STRAORDINARIA PERFORMANCE DEL DESIGN

## PUREVISION® TORIC

vs.

## PUREVISION®2 FOR ASTIGMATISM

Trasmissibilità di ossigeno*:	91 Dk/t**	91 Dk/t**
Curva base:	8.7 mm	8.9 mm
Diametro:	14.0 mm	14.5 mm
Spessore centrale*:	0.10 mm	0.10 mm
Sistema di bilanciamento*:	Lo-Torque® Design (Prism)	Auto Align Design™ (Prism + Peri)
Spessore Ballast*:	0.345	0.300
Spessore al bordo:	0.089	0.050
Soluzione di confezionamento:	Salina tamponata	Salina tamponata con Poloxamina^

\*Misura al centro in lente -3.00D -1.25 x 180

\*\* Basato su Dk/t corretto al bordot

^ SURFATTANTE

# BAUSCH + LOMB




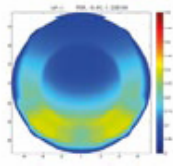
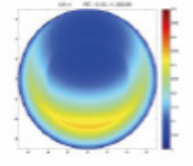








© 2011 Bausch & Lomb Incorporated. ®/™ denote trademarks of Bausch & Lomb Incorporated.  
All other product/brand names are trademarks of their respective owners.

PNS05747











# Silicone-Hydrogel Toric Competitors



			Acuvue Oasys®	Air Optix®	biofinity® toric
Mapa degli spessori (-3.00/-1.25x180)*					
Curva base	8,9mm	8,7mm	8,6mm	8,7mm	8,7mm
Diametro	14,5 mm	14,0mm	14,5 mm	14,5 mm	14,5 mm
Dk/t per lente -3,00/-1,25x180 corretto al bordo	91	91	129	108	116
Sistema di marcatura	a ore 6 e asse del cilindro	a ore 5, 6 e 7	a ore 6 e 12	a ore 3, 6 e 9	a ore 6
Controllo dell'aberrazione sferica	In tutto il range di poteri e in <b>tutti</b> i meridiani, Sfera e Cilindro	Nel range centrale di poteri nei meridiani della sfera	No	No	No
Profilo del bordo Sezione orizzontale di lente -3,00 -1,25 x 180 ottenuto con un ingranditore Nikon Video Microscope (20x)					

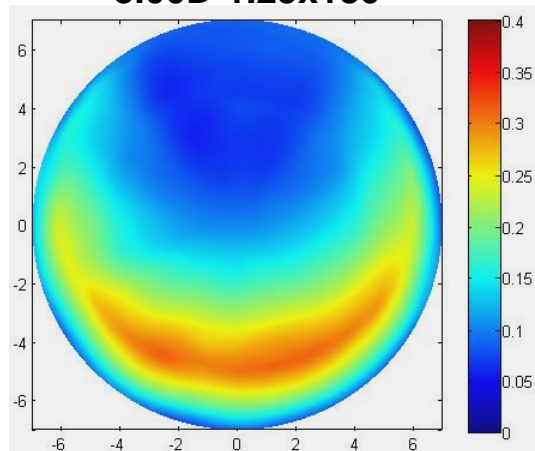


	Acuvue Advance for Astigmatism	Acuvue OASYS for Astigmatism	Air Optix for Astigmatism	Biofinity Toric
PRODUTTORE				
POLIMERO	galyfilcon A	senofilcon A	lotrafilcon B	comfilcon A
Dk†	60	103	110	128
CONTENUTO D'ACQUA	47	38	33	48
CURVA BASE	8.6	8.6	8.7	8.7
DIAMETRO	14.5	14.5	14.5	14.5
SISTEMA DI STABILIZZAZIONE				
SFERA (D)	Accelerated Stabilization Design  +6.00 to -6.00 (0.25 steps) -6.50 to -9.00 (0.50 steps)	Accelerated Stabilization Design  +6.00 to -6.00 (0.25 steps) -6.50 to -9.00 (0.50 steps)	Precision Balance 8/4  +6.00 to -6.00 (0.25 steps) -6.50 to -9.00 (0.50 steps)	Optimized Ballast Design  +6.00 to -6.00 (0.25 steps) -6.50 to -10.00 and +6.50 to +8.00 (0.50 steps)
CILINDRO (D)*	-0.75, -1.25, -1.75, -2.25	-0.75, -1.25, -1.75, -2.25	-0.75, -1.25, -1.75, -2.25	-0.75, -1.25, -1.75, -2.25
ASSI (°)	10 to 180 (10° steps)	10 to 180 (10° steps)	10 to 180 (10° steps)	10 to 180 (10° steps)

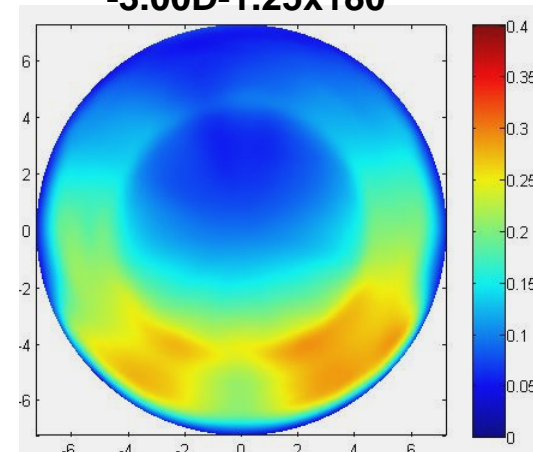
† Dk/t will vary according to lens power

\*Cylinder powers not available in all spherical powers and axes, check with manufacturers.

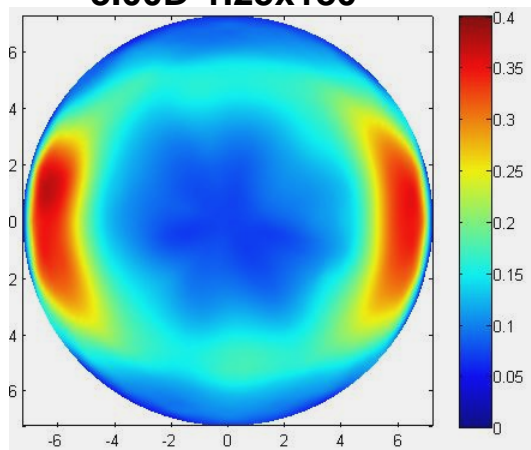
**PureVision Toric**  
**-3.00D-1.25x180**



**PureVision2 HDA**  
**-3.00D-1.25x180**



**Acuvue Oasys for Astigmatism -**  
**3.00D-1.25x180**



**Ciba Air Optix for Astigmatism -**  
**3.00D-1.25x180**

